



NSW RURAL FIRE SERVICE

## Operations

AREA – SOUTH WESTERN  
LOCATION – ALBURY

Area Commander  
RFS 12/13

Manager  
Capability  
RFS 10/11

OpO 1  
(Capability)  
RFS 4/5

Support Officer  
RFS 1/2

Manager  
Community Risk  
RFS 10/11

OpO 1  
(Mitigation)  
RFS 4/5

Mitigation Crew  
Wagga

Mitigation Crew  
Griffith

Manager  
People & Business  
RFS 10/11

People & Business  
Coordinator  
RFS 8/9

Administration  
Coordinator  
RFS 4/5

Administration  
Officer  
RFS 2/3

Districts

Lower Western

MIA

Mid Murray

Southern Border

Bland Temora

Riverina

Additional role since draft Change Management Plan

Represents crews or groups of staff, not specific roles

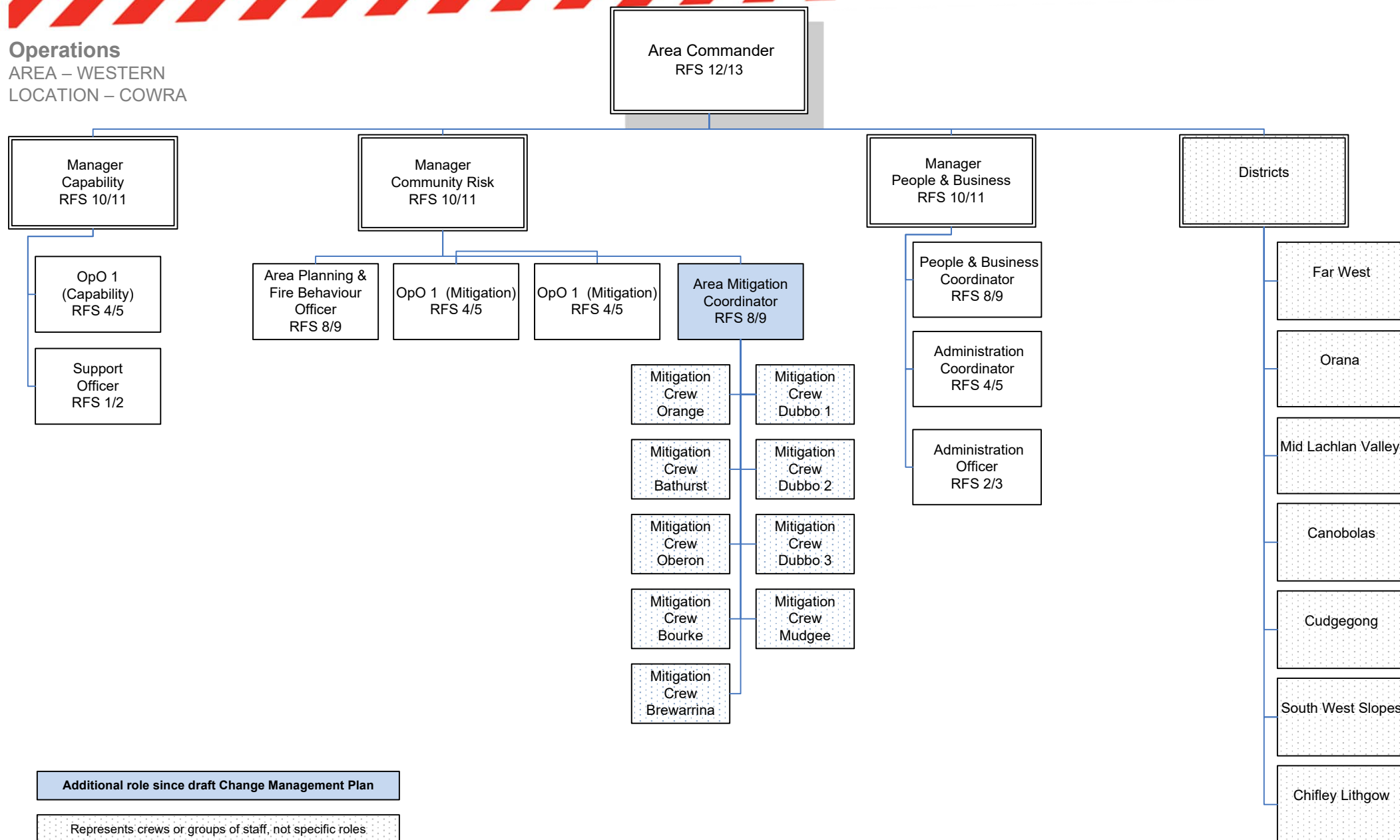


NSW RURAL FIRE SERVICE

## Operations

AREA – WESTERN

LOCATION – COWRA



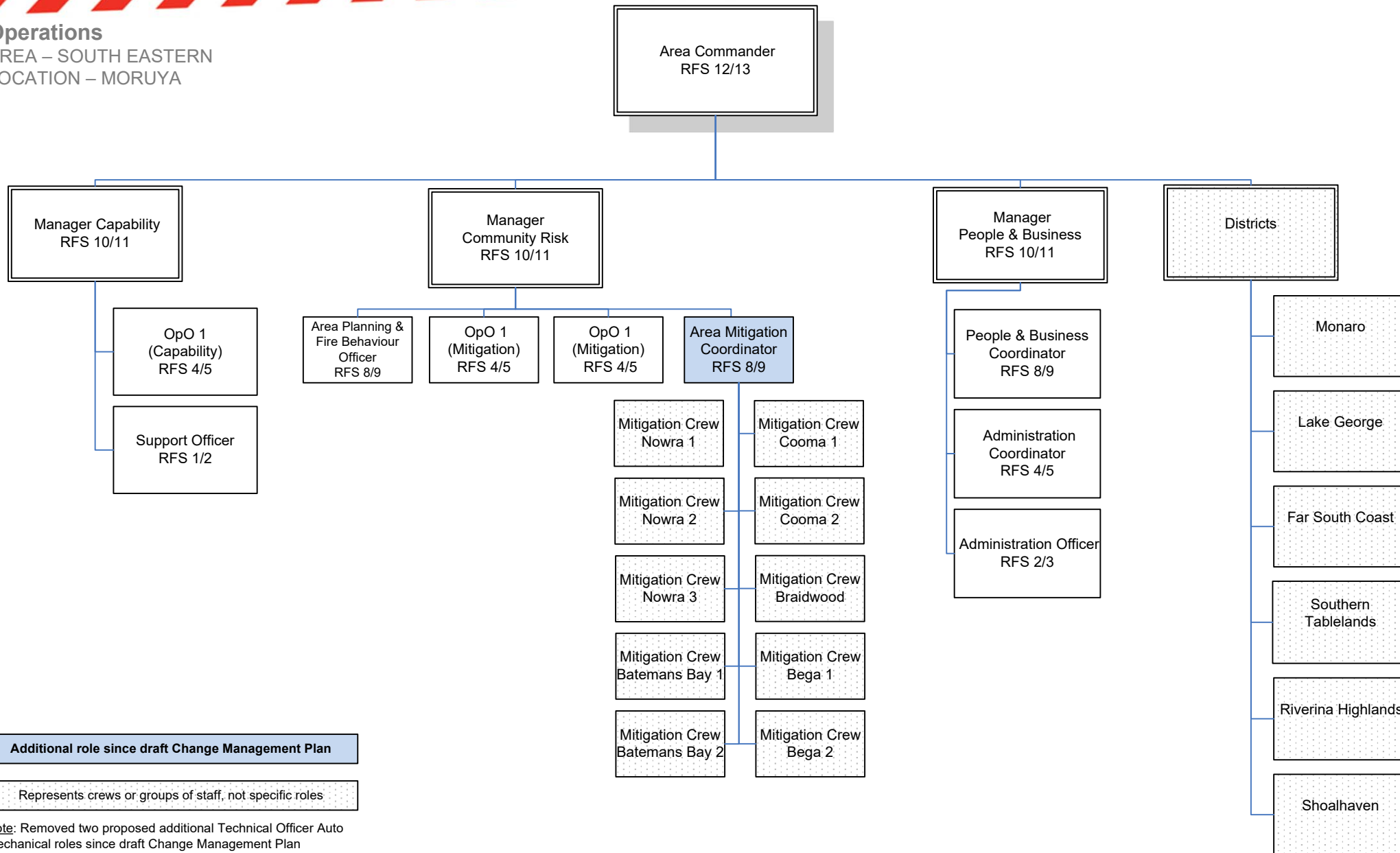


NSW RURAL FIRE SERVICE

## Operations

AREA – SOUTH EASTERN

LOCATION – MORUYA



**Note:** Removed two proposed additional Technical Officer Auto Mechanical roles since draft Change Management Plan