

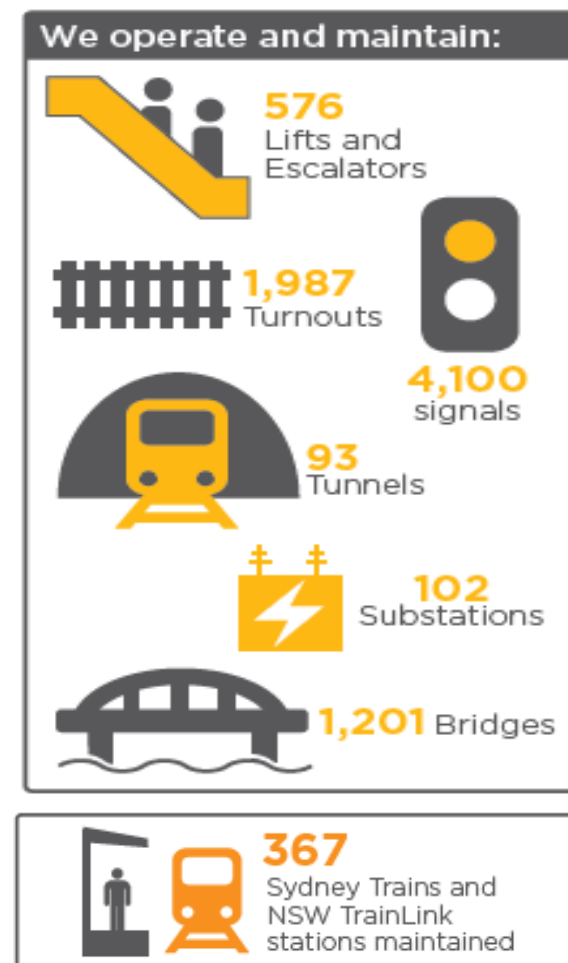
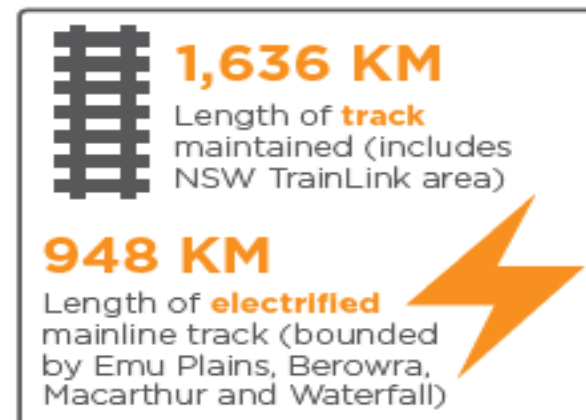
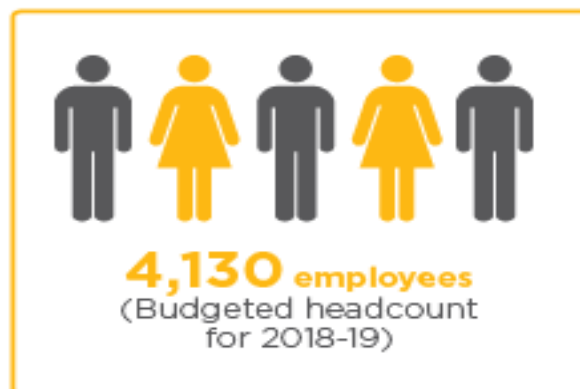
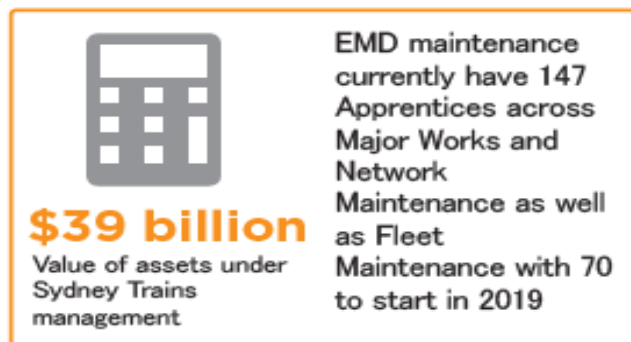
# Sydney Trains Apprenticeships

Information pack



Commercial in Confidence

# About Engineering & Maintenance



# Apprenticeships at a glance

We're so glad you're interested in an apprenticeship with Sydney Trains.

If you like working with your hands, want to get paid to learn a useful trade and are excited about where a career with Sydney Trains could take you – an apprenticeship is the perfect place to start!

## The important stuff:

- Apprenticeships are a four year program (three for telecommunications)
- Your starting pay rate will be \$589.80 per week or \$923.45 per week for apprentices aged 21+
- It's a full-time program which might involve rotating to work at different depots every 3 or 6 months
- Weekend and overnight shifts will be part of your apprenticeship as per the needs of the business
- You will need to work to a set roster which includes on-the-job training, classroom study (TAFE) and rostered annual leave
- You will graduate with an industry recognised qualification and plenty of great experience!

Use this information pack to find out more about the different apprenticeships we offer and how to apply!

# Application Top Tips

We get a lot of applications for our apprenticeship program every year, so we want to make sure you have all the information you need to put together a winning application.

## Our top 3 application tips:

1

### READ:

Before starting the application process, make sure you read the whole Job Advertisement and the attached Position Description.

2

### CHOOSE YOUR PREFERENCE CAREFULLY:

You can only apply for ONE discipline out of nine. Each one requires slightly different skills and will involve working from different locations so make sure you select the one that works best for you.

3

### TAKE YOUR TIME:

When applying, read and answer every question carefully and honestly – there's not need to rush through it!

# Apprenticeship Disciplines

You can choose to apply for the following trades:

- Telecommunications
- Signal Fitting
- Signal Electrical
- Substations
- Rail Traction
- Auto Electrician (or Plant Mechanics?)
- H.V Cables

**Not sure which one is right for you?**



**Read on to find out more!**

# Telecommunications

As a **Telecommunications Apprentice**, you'll keep Sydney Trains Train Operations talking.

You will learn to maintain, operate and repair communication systems as well as install, configure, operate, maintain, troubleshoot and repair telecommunications services in support of Rail Operations.



## Rotations

Frequency: Every 3 months

Locations: Erskineville, Belmore, Hornsby, Central Station, Pitt Street

# Signal Fitting

As a **Signal Fitter Apprentice** you will be trained to operate lathes, milling machines, drills, grinders, oxy-acetylene cutting equipment and electric welders as well as general hand and power tools and general fitting.

## Rotations

Frequency:	An external rotation to industry will be undertaken in 3rd year for 6 months
------------	--

Locations:	Clyde only
------------	------------





# Signal Electrician

As a **Signal Electrician Apprentice**, you will work on the installation and maintenance of electrical and mechanical signalling, point machines, colour light signals, power supplies, track circuits, control systems and multicore cabling systems.



## Rotations

Frequency:	Every 6 months
Locations:	Clyde, Hamilton, Hornsby, Gosford, Sydenham, Sutherland, Wollongong, Blacktown, Lawson



# Substations

As a **Substation Distribution Apprentice**, you will help power our rail network. You will work on the installation and maintenance of electrical equipment in high voltage rail substations including rectifiers, transformers, and high and low voltage switchgears.

It also involves the installation and maintenance of general lighting and power services together with various types of electrical appliances.

## Rotations

Frequency: Every 6 months

Locations: Strathfield, Clyde, Hamilton, Hornsby, Gosford, Sydenham, Sutherland, Wollongong, Blacktown, Lawson



# Rail Traction

As a **Rail Traction Apprentice**, you will construct and maintain high voltage transmission lines and 1500-volt overhead rail-traction wiring and associated equipment.

You get to work outdoors with a variety of interesting track machines and lifting equipment. **You will need to work at heights and in all kinds of weather.** The work is physically demanding yet rewarding.

## Rotations

Frequency: Every 6 months

Locations: Strathfield, Clyde, Hamilton, Hornsby, Gosford, Sydenham, Sutherland, Wollongong, Blacktown, Lawson



# Plant Mechanic

As an **Apprentice Plant Mechanic**, you will learn the skills in maintenance of heavy plant on track machinery and specialising in rail machinery, general earthmoving equipment and small specialist rail plant and machinery.



## Rotations

Frequency:	An external rotation to industry will be undertaken in 3rd year for 6 months
Locations:	Clyde only

# High Voltage (H.V) Cables

As an **Cable Jointer Apprentice** you will be involved in the make and repair of joints in insulated power supply and control cables installed in underground pipes, trenches, and/or overhead supply systems.

As a specialised Cable Jointer you will work all over the rail network.



## Rotations

Frequency:	No rotations
Locations:	Clyde only



Please note: The majority of our trades will require you to work at heights or in confined spaces

